

Pan-Canadian Trust Framework Public Sector Profile V1.1

1. Pan-Canadian Trust Framework Document

- Comprehensive document (83 pages)
- Combines scope of **Persons, Organizations, and Relationships**
- Defines **29 Atomic Processes and Qualifiers** (levels of assurance, etc.)
- Provides background information, high-level guidance and definitions.

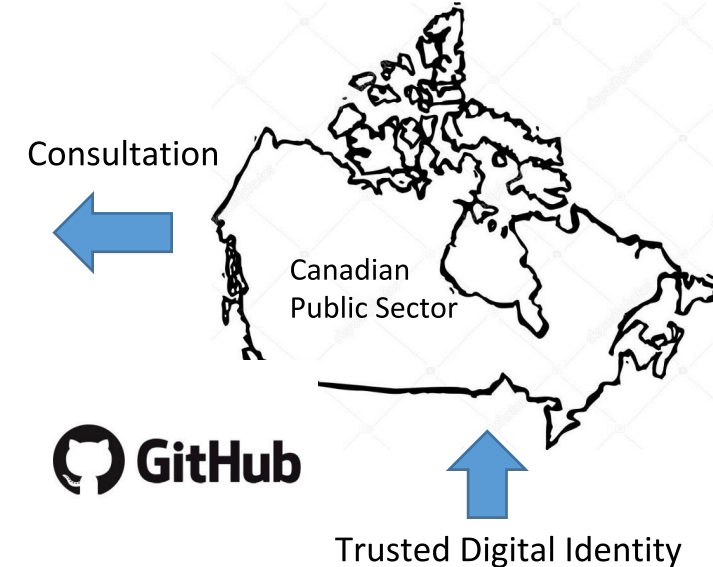
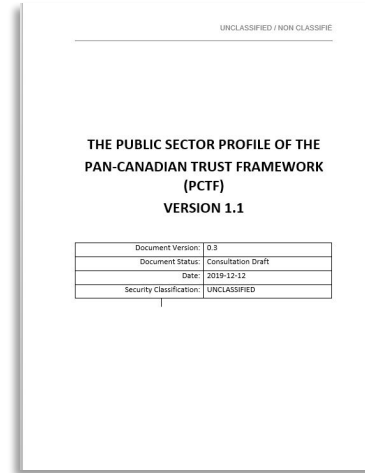
2. PCTF Assessment Worksheet

- Specifies **Conformance Criteria** for each atomic process (approximately 400+ in total)
- Outlines an **Overall Assessment Approach** to collect and assess evidence (program documentation, etc.)
- Documents assessment outcome for each conformance criteria: [**Accepted, Not Accepted, Accepted with Condition, Accepted with Observation, Not Applicable**]

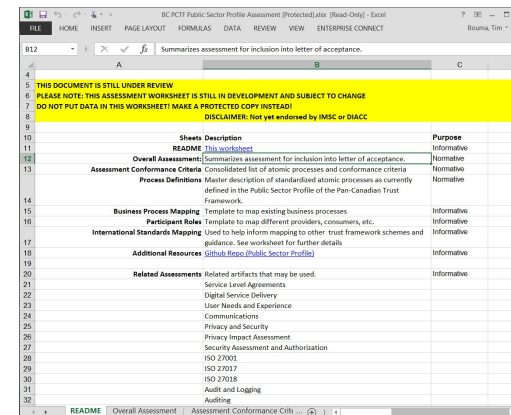
3. GC Letter of Acceptance

- Formally documents the outcome of PCTF assessment process
- Issued to acknowledge acceptance of a trusted digital identity.

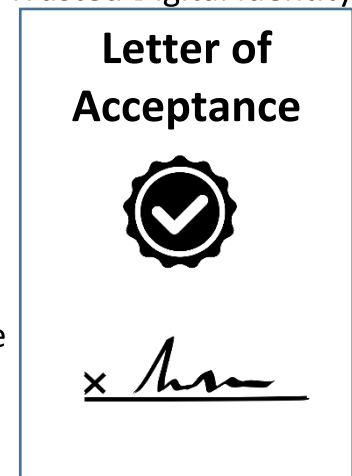
Primary Deliverable



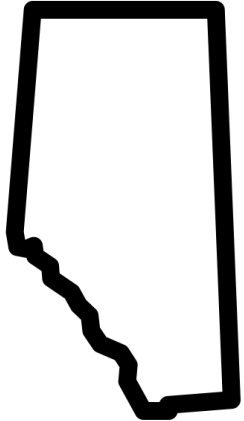
Assessment Worksheet



Acceptance



PCTF Public Sector Profile Assessments: Conducted to Date



Province of Alberta

- **April-August 2018** Initial Assessment
- **September 2018:** Letter of Acceptance Issued
- **August 2019:** Go-Live on My Service Canada Account



Province of British Columbia

- **August-December 2019** Initial Assessment
- **Q1 2020:** Letter of Acceptance Issued (Jan 2020)
- **Q1 2020:** Go-Live on My CRA Login (Feb 2020) My Service Canada Account (Est.)



Rest of Canada

- **2020-202X (Est.)**

My Service Canada Account

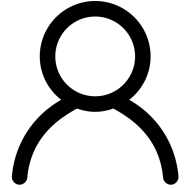
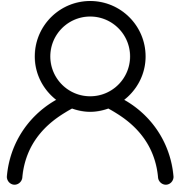
Sign in with your province:

Alberta residents can access My Service Canada Account using their provincial digital ID ([MyAlberta Digital ID](#))

Option 3 – Using a BC Services Card

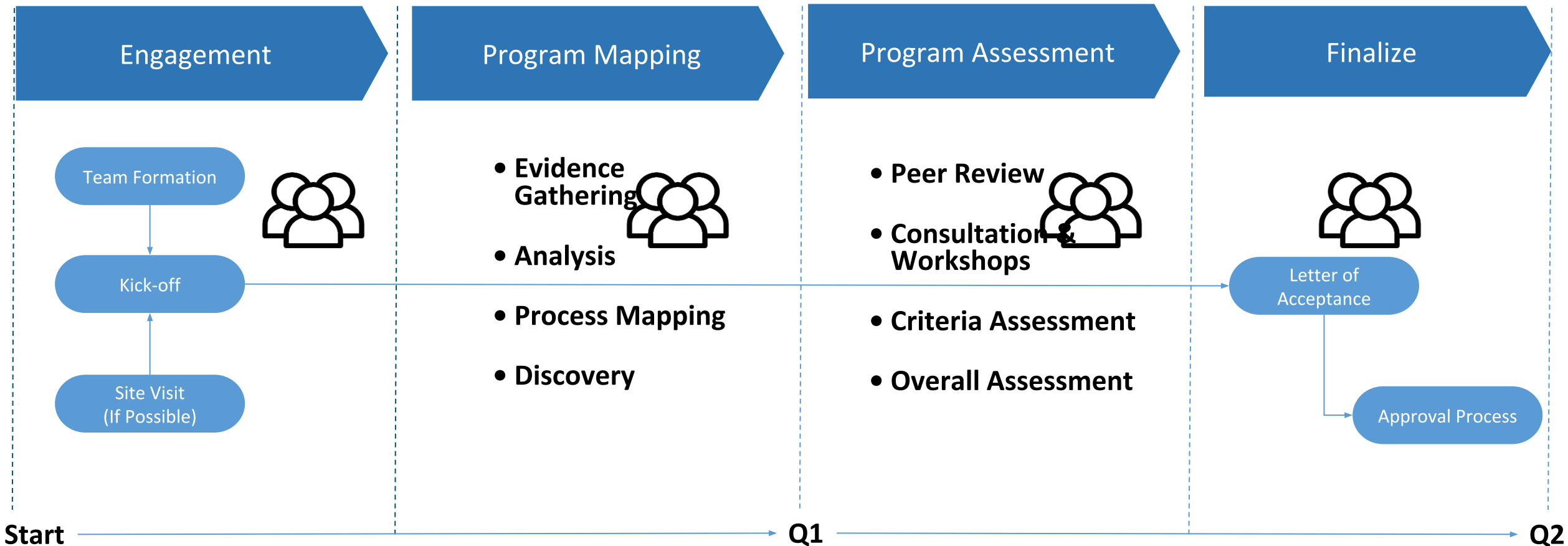
Log in with your BC Services Card.

[BC Services Card Login](#)



Overview of PCTF Public Sector Profile Assessment Process

- Assessment process is conducted in **four phases** over **two fiscal quarters**
- Resourcing during phases requires **3.0 FTE** * - **2.0 FTE*** for dedicated analysis + **part-time 1.0 FTE** for consultation and assistance.



Estimated Duration: 2 fiscal quarters (approximately 6 months)

Estimated Effort: Q1: (2.0 FTE x 100% + 4.0 FTE x 25% = **3.0 FTE**) **Q2:**(2.0 FTE x 100%+ 10.0 FTE x 10% = **3.0 FTE**)

* FTE is full-time-equivalent

Federal Digital ID

Legislation

- *Financial Administration Act*

Policies

- *TB Policy on Government Security*

Directives

- *TB Directive on Identity Management*

Standards

- *Standard on Identity and Credential Assurance*

Guidelines and Technical Standards

- *Guideline of Identity Assurance, Authentication Requirements*
- *CATS, ITSP.030.31*

Prov/Terr Digital ID

Legislation

Policies

Directives

Standards

Guidelines and Technical Standards

National / International Digital ID

*Legislation , Agreements, Treaties, etc.
(e.g. ISO, OECD, WEF, World Bank, etc.)*

National / International Standards
(national in scope with potential for international)

Alignment

Assessment

Public Sector Profile Pan-Canadian Trust Framework

Assessment and Approval

Conformance Criteria

Focus: Program Integrity

- Public Interest: specialized to needs of Public Sector to ensure trust and confidence.
- Has been tested and revised based on AB and BC assessments
- Version 1.1 now available

DIACC Pan-Canadian Trust Framework

Assessment and Approval

Conformance Criteria

Focus: Products & Services

- Private Sector-driven: goal is to encourage standardized commercial products and services.
- Remains to be tested
- Version 1.0 pending.

Other Trust Frameworks

EIDAS (EU)

TDIF (Australia)

Kantara

- There are multiple international and industry specific trust frameworks
- Participating in Digital Nations Thematic Group on Digital Identity

PCTF Public Sector Profile: Lessons Learned So Far

1. Requires collaborative team effort with experts on the ground.

- Kick-off involved in-person visit to i) gain direct knowledge of program and ii) establish close working relationship between team members.
- Regular calls (and videoconferencing) between teams.
- Gathered and compiled evidence using conformance criteria templates submitted for assessment.
- Assessment is a discrete work stream, however tightly coupled to other work streams (technical integration, MOU, agreements etc.)
- Engage legal counsel early in the process, as there will be implications for agreements and authorities.

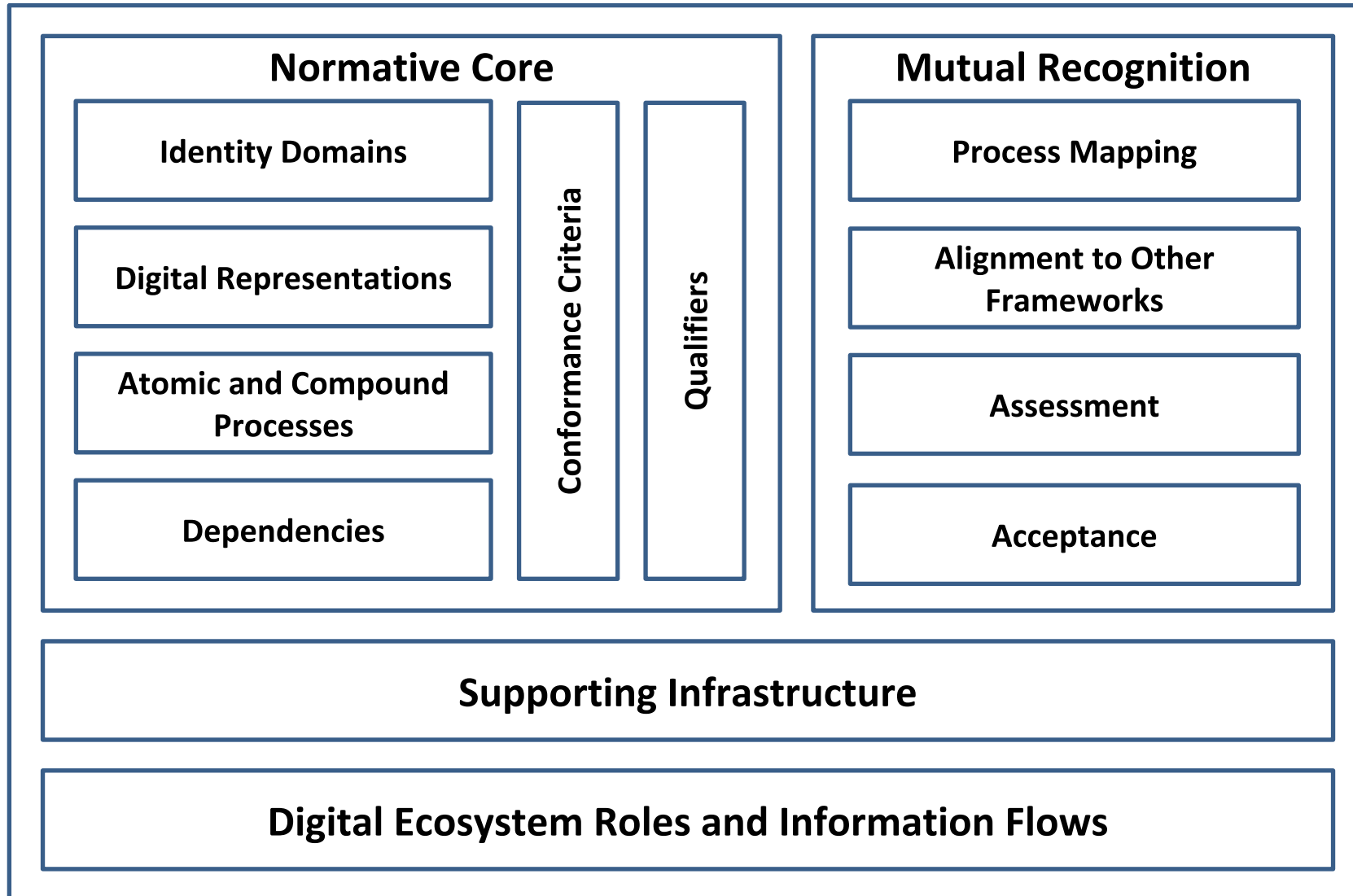
2. Assessment process is iterative and continuously improving.

- Applying best practices from other frameworks (e.g., security assessment and authorization)
- Development of master spreadsheet to assess evidence against conformance criteria with traceability to policy requirements.
- Evidence collected in separate documents and filed for subsequent analysis, review and audit. Final review results in a Letter of Acceptance.

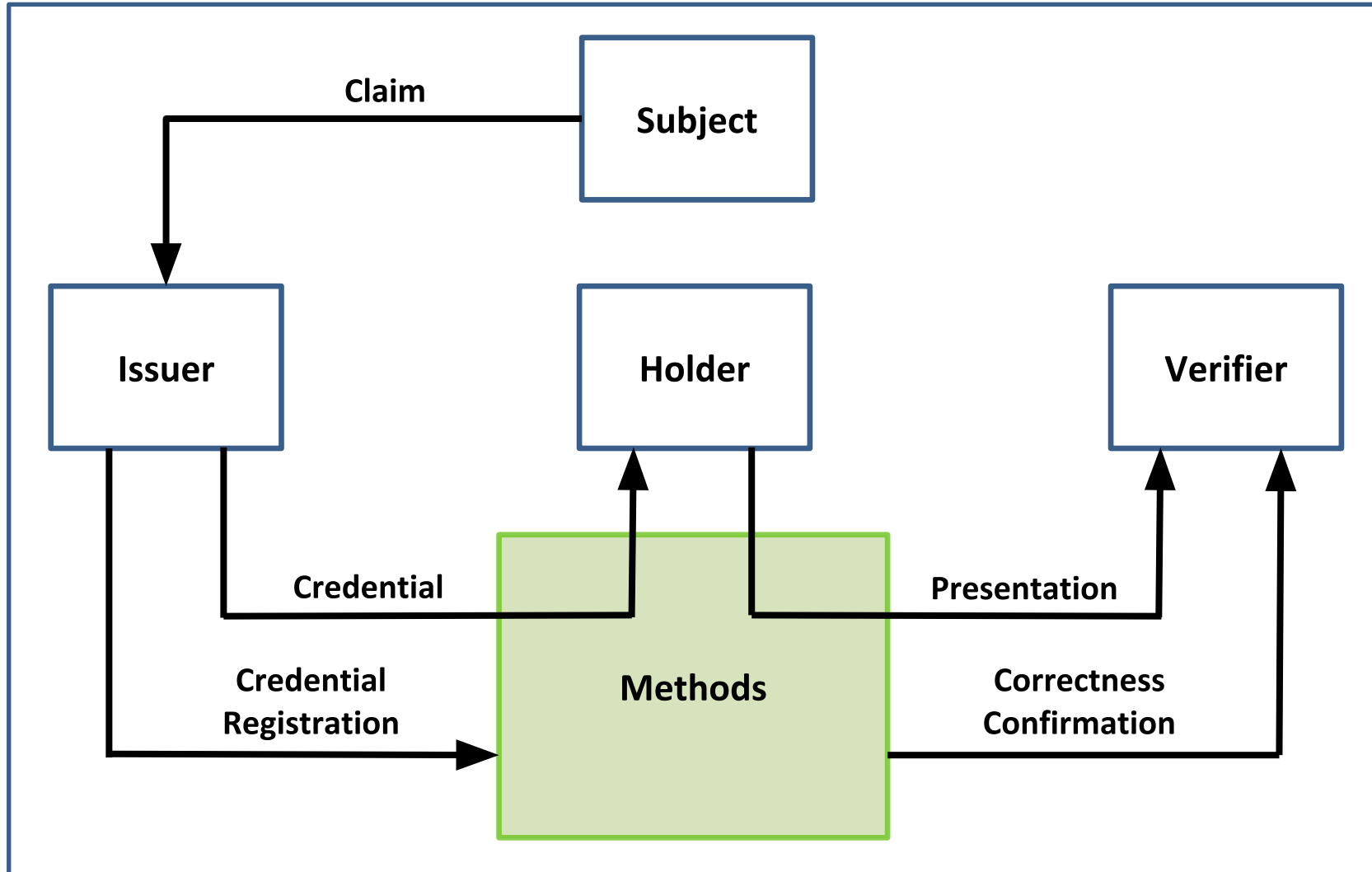
3. Next Steps: PCTF is evolving for fit and purpose (we are defining the 'state of the art')

- Continue to clarify distinction of responsibilities between departments and jurisdictions. Identifying dependences with processes in existing programs (e.g. vital statistics, motor vehicle licensing) and other jurisdictions (e.g., federal immigration).
- Maintain focus of PCTF as a business process integrity framework that complements (not replaces) existing technical interoperability standards and frameworks (e.g., SAML, Open ID Connect, Verifiable Credentials). PCTF also complements existing assessment processes or agreements (e.g., Privacy Impact Assessment, Security Assessment and Authorization, SOC2 Trust Principles).
- Ensure PCTF is alignment with global frameworks, World Bank, European Union, Financial Action Task Force (customer due diligence)

The PCTF Model



Mapping the PCTF to Emerging Digital Ecosystems



Mapping the PCTF to Emerging Technology Stacks

Trust over IP Stack	PCTF Model
Layer 4: Governance Frameworks	Normative Core
	Mutual Recognition
Layer 3: Credential Exchange	Digital Ecosystem Roles
Layer 2: DIDComm	Supporting Infrastructure
Layer 1: DID Registries	

PCTF Public Sector Profile: Key Milestones and Next Steps

1. Pan-Canadian Trust Framework Consultation Draft Version 1.1

- PCTF Working Group Consultation Draft was finalized on **June 2, 2020**
- Posted on GitHub for broader consultation and review (**June 2020 to ?**)
- Re-starting PCTF WG Weekly Series
 - Focus on Thematic Issues (e.g., Digital Relationships, Informed Consent, Unregistered Organizations)

2. PCTF Assessment Worksheet

- Consolidation all **Conformance Criteria** for each atomic process (400+ in total)
- Integration of **Organization Conformance Criteria** (may be a separate worksheet)
- Continued refinement and validation of Conformance Criteria

3. PCTF Assessment and Mutual Recognition

- Continued iteration of PTCF assessment processes into a formalized program.
- Exploring alignment with other frameworks (eIDAS, Digital Nations, etc.)